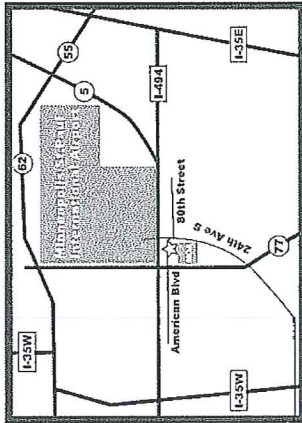


Land of 10,000 Stitches
Heartland Region Fall Workshop
Dates - October 21-23, 2011
Hosted by St. Paul Needleworkers
Chair: Susan Ritter, smritter50@yahoo.com

Ramada Mall of America
2399 East American Blvd
Bloomington MN 55425
952-854-3411

Group: Embroiderers' Guild of America
Room price \$99.00 double occupancy
Reserve room before Sept. 30, 2011
to receive group rate



<http://www.ramadamao.com>

From the North 35W South to I-494 East; Exit on 24th Ave. Or 35E South to I-494 West; Exit on 24th Ave.
From the South 35W North to I-494 East; Exit on 24th Ave. Or 35E North to I-494 West; Exit on 24th Ave.
From the East I-494 West to 24th Ave. exit; Located on south side of Interstate
From the West-494 East to 24th Ave. exit; Located on south side of Interstate

Workshop Features:

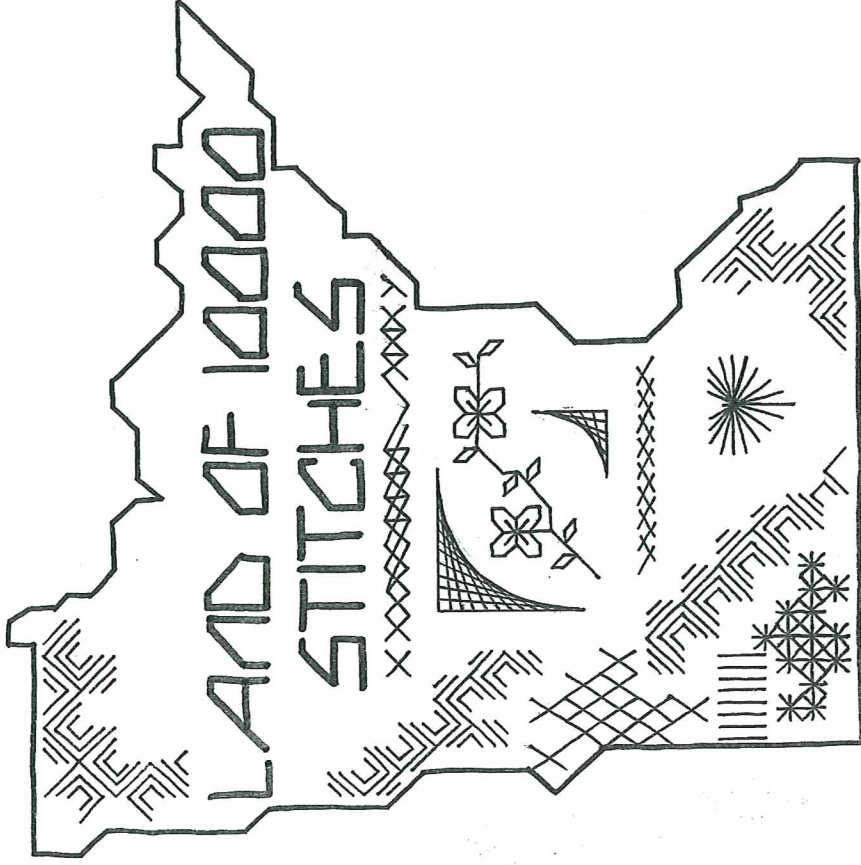
Four meals -

- Friday evening buffet - Minnesota Hot Dish
- Saturday breakfast buffet
- Saturday evening banquet
- Sunday morning buffet

Six classes 9:00 a.m. to noon on Saturday & Sunday
Hospitality room, Opportunity Baskets and more!

Saturday afternoon:

- Visit Mall of America or local stitching, beading & quilting shops
- Free shuttles to Mall of America from hotel and MOA coupon book.



Heartland Region Fall Workshop

Hosted by St. Paul Needleworkers

at

Ramada Mall of America
Bloomington, Minnesota

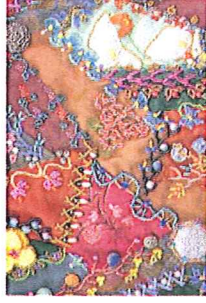
October 21-23, 2011

Classes

“Crazy Beading” with Nancy Eha

Learn to replicate traditional Crazy Quilt needlework embroidery stitches with seed beads. Then explore embellishment options including petals, leaves, and grapes. Beaded edging options and fringe will also be covered. All experience levels, no sewing machines.

Kit Fee: \$13 includes all beads, threads, needles, patterns
Session: Saturday and Sunday mornings



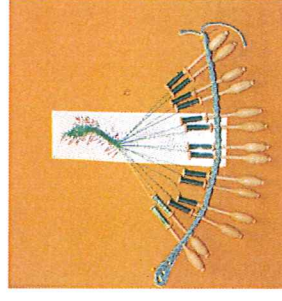
Bobbin Lace Snake Bookmark with Marilee Sagat

Learn bobbin lace with a beginning bookmark pattern using the whole stitch.

Kit includes pillow, prickings, simple bobbins, thread, pins and bobbin holder.

Kit fee: \$20

Session: Saturday morning or Sunday morning



Sunset Lake Or Nué Coin Purse with Pat Philip

Create a beautiful lakescape by couching metallic threads with colorful silks and complete the background with burden stitch. Slipstitch your embroidery over a prefinished lining to create a coin purse.

Student Supplies #24 and #26 tapestry needles, 8 x 8 inch stretcher bars and thumbtacks for mounting canvas

Kit Fee \$20 includes 24 ct Congress cloth, Silk Threads, Prefinished Zippered Purse Lining
Session: Saturday morning



Blue Pomegranate with Alissa Rosenberg

A traditional Crewel design stitched in Appleton crewel wool on white linen twill. It measures 5" square and features a pomegranate and a large leaf with a trellis design. Colors are soft blues and greens with some brown and a touch of yellow. Class will focus on teaching the trellis stitch, coral knots, and alternate ways of treating the pomegranate. Additional crewel stitches may be discussed, depending on time.

Students should bring a 4" screw-type embroidery hoop plus the usual embroidery supplies.

Optional: copies of Erica Wilson's or Audrey Francini's books on crewel embroidery.

Kit fee \$15 include linen twill, Appleton wool, and crewel needles
Session: Saturday morning



It's a Wrap with Carol Pedersen

Several openwork motifs – flowers, butterfly, truck, etc. – will be taught using a pretty bookmark. Students will be taught how to start and end colored threads to hide them. You will choose which motif(s) to stitch in class.

PREWORK: Stitch all Klosters and Blanket stitch edge

Kit Fee: \$5 includes Stitch instructions, #12 pearl cotton in colors needed for each motif chosen, Needle – size 26

Session: Sunday morning



Aztec Stitch Storage Pouch with Pat Philip

Learn Mexican drawn thread work, Mexican hemstitch, and satin stitch variation. Easy finishing turns your embroidery into a 5 x 7 inch zippered storage pouch.

Student Supplies #24 and #26

tapestry needles, scroll frame or 5-inch screw hoop

Kit Fee \$25 includes 25ct

Evenweave Fabric, Silk Threads, Prefinished Zippered Pouch Lining
Session: Sunday morning

